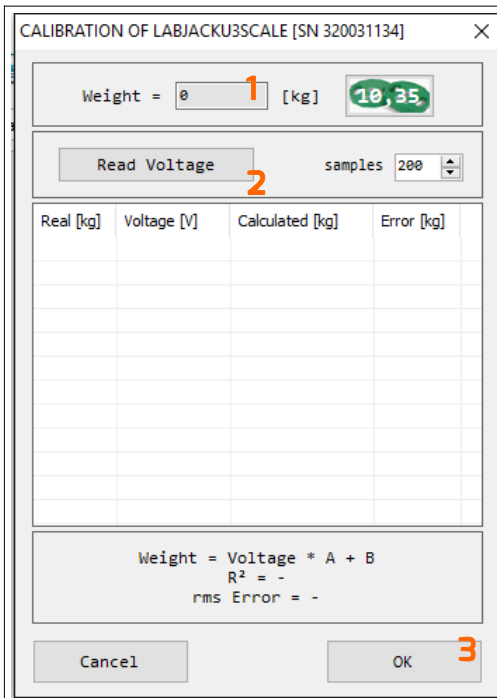
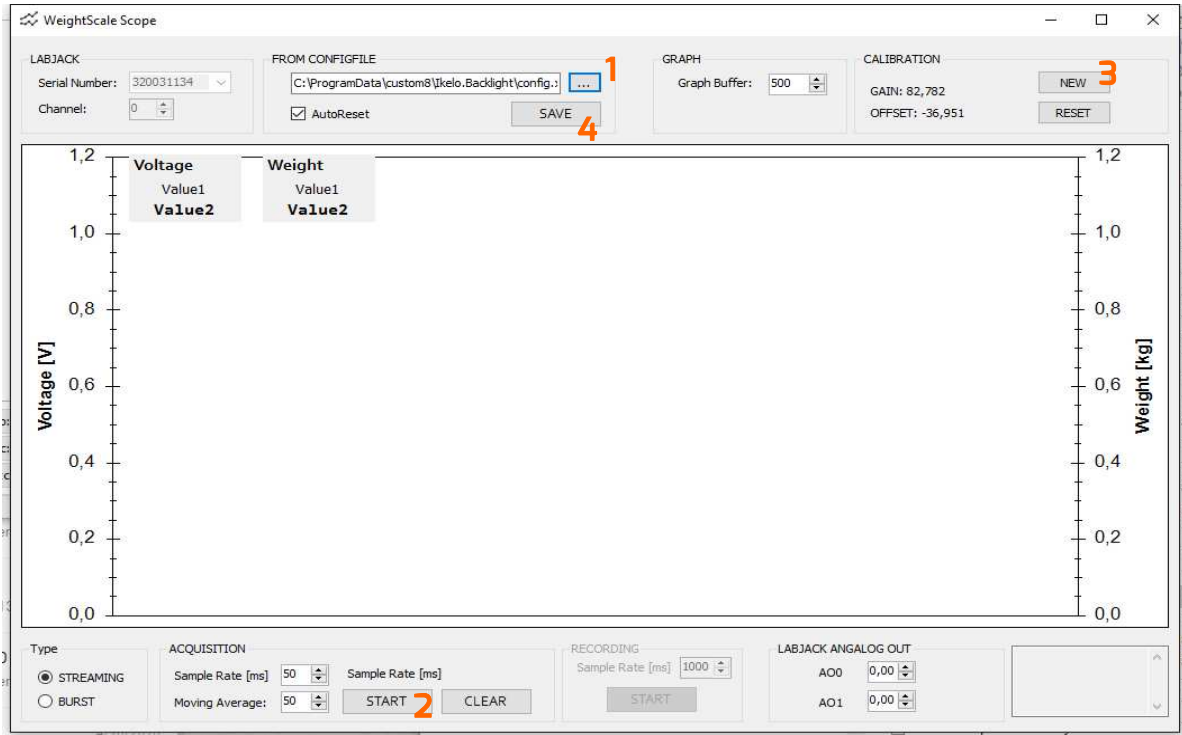


Ikelo Weight Scale Calibration

1. open the config file located at "c:\programdata\custom8\Ikelo.Backlight\config.xml
2. start the scope
3. click new to perform new calibration (see next section)
4. click save & exit



1. input the value of the know weight [1]
2. click 'read voltage' [2]
3. wait 3 seconds
4. 'click 'read voltage'

repeat 1-4 for at least 4 different weights (including 0kg), ideally evenly distributed between 0 & 100kg

click 'OK' when done [3]